

AlarmSense™

NIHON KOHDEN

ALARM FATIGUE CONTROLLING THE NOISE

AlarmSense provides highly advanced analytics for the purpose of identifying inefficiencies in current hospital alarm management strategies.

The Alarm Management Challenge

Nurses spend over a third of their shift responding to alarms, with most requiring no clinical intervention. These interruptions pull staff away from patient care, leading to burnout and costly turnover.

99% of alarms

don't require clinical intervention¹

35% of nurse time

lost to alarm response²

\$260,000 cost

per 1% increase in staff turnover³



Manage alarm data with clarity

AlarmSense™ provides alarm analytics from hospital-wide patterns to individual bed data. This comprehensive view helps healthcare teams:

- Track alarm patterns across multiple units
- Analyze trends at different care levels
- Categorize alarms into type (Clinical, Technical, etc.)

A SMARTER SOLUTION

Through comprehensive alarm analytics, **AlarmSense™** helps healthcare teams reduce time spent managing alarms and focus more on patient care.

¹ Chromik, J., Klopfenstein, S. A. I., Pfitzner, B., Sinno, Z. C., Arnrich, B., Balzer, F., & Poncette, A. S. (2022). Computational approaches to alleviate alarm fatigue in intensive care medicine: A systematic literature review. *Frontiers in digital health*, 4, 843747. <https://doi.org/10.3389/fdgth.2022.843747>

² NSI. (2024) Nursing Solutions Inc. 2024 National Healthcare Retention and RN Staffing Report. https://www.nsinursingsolutions.com/Documents/Library/NSI_National_Health_Care_Retention_Report.pdf

³ Lewandowska, K., Weisbrot, M., Cieloszyk, A., Mędrzycka-Dąbrowska, W., Krupa, S., & Ozga, D. (2020). Impact of Alarm Fatigue on the Work of Nurses in an Intensive Care Environment-A Systematic Review. *International journal of environmental research and public health*, 17(22), 8409.

Advanced Alarm Analytics, Management and Modeling

Powered by our secure cloud platform, AlarmSense™ offers:



90-Day Trend Analysis

- Easily track and analyze alarm trends hospital-wide
- Longer data retention facilitates trend analysis and strategy adjustments
- Ability to normalize data outliers caused by high-risk or high-alarm patients



Alarm Modeling

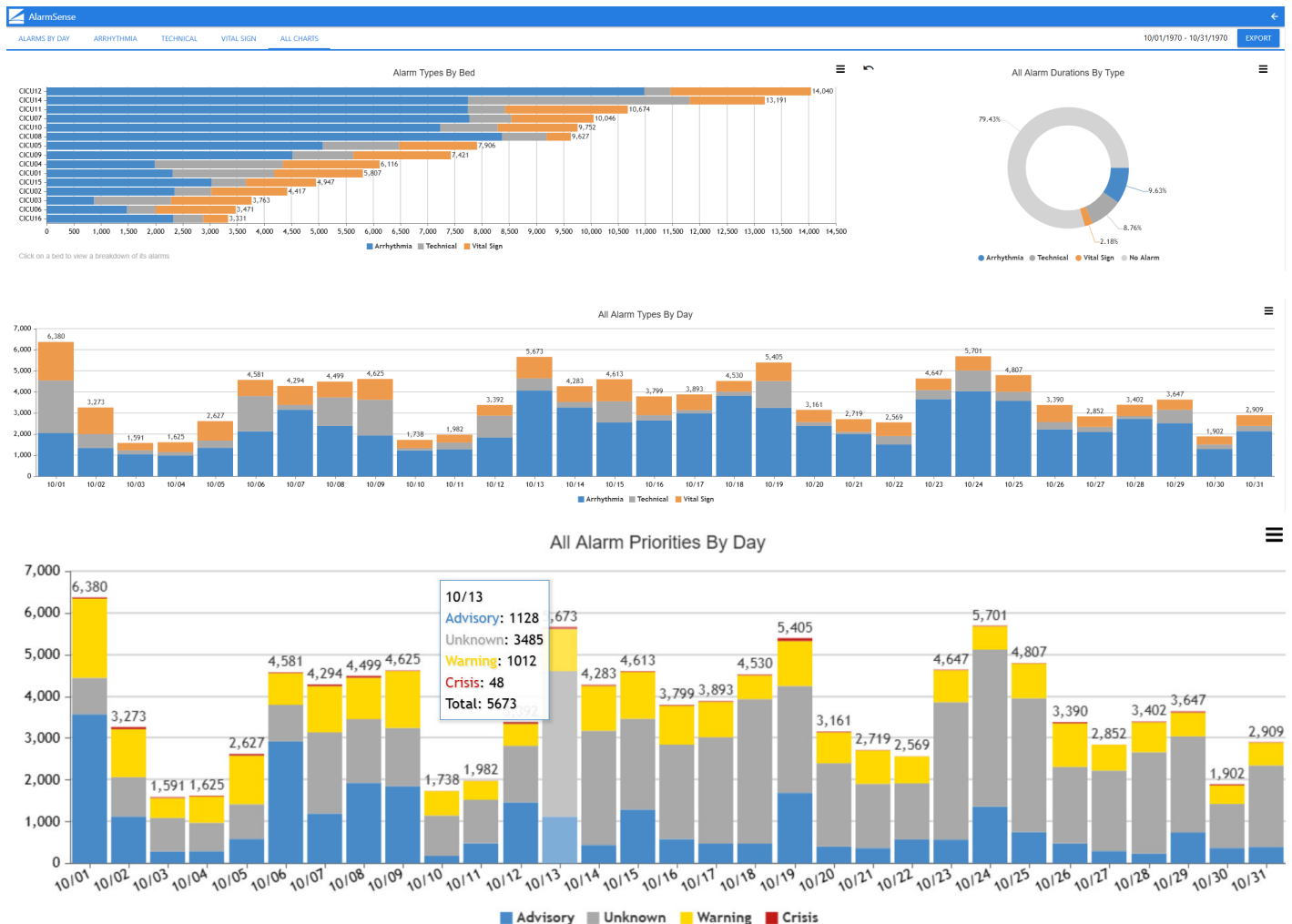
- Advanced analytical modeling helps with identification of false alarms, proven to encompass 99% of alarms
- Tackle alarm threshold challenges with targeted optimizations for alarm personalization
- Improve staff satisfaction and lessen burnout caused by “alarm fatigue”



Clinical Optimization

- Customize individual alarm settings to patients
- Tailored alarm management strategies for custom work flows in your institution
- Expert clinical support available to analyze data on alarms

Deep dive into alarm data by location, date, time, and type



Smarter alarm management starts here.

Why choose AlarmSense™?



Reduce non-actionable alarms

Data-driven analytics help identify which alarms need immediate attention



Optimize alarm settings

90-day data analysis reveals opportunities to improve alarm management



Access expert support

Clear visualization of alarm patterns and trends helps enhance quality of care



Alarm management solutions scalable to fit your organization's need:



One-Time Consulting

Tailored clinical expertise for recommendations on alarm optimization



Dashboard

Modifiable dashboard with ability to adjust and export data



Full Suite

Continuous partnership focused on refinement and optimization

Schedule a personalized demo to see firsthand how AlarmSense™ can help you manage clinical alarms more effectively.

NIHON KOHDEN AMERICA

15353 Barranca Pkwy, Irvine, CA 92618

800.325.0283 us.nihonkohden.com

AlarmSense is a trademark of Nihon Kohden Digital Health Solutions, LLC.

MKT-01494[A]